

# Welcome to Incoming 6th Grade Parent Orientation

Mount View Middle School

# MEET THE STAFF

**Mr. Allen Cosentino, Principal**

**Mrs. Kimberly Hess, Assistant Principal**

**Mrs. Angie Szalecki, 6<sup>th</sup> grade Counselor**

**Mrs. Elaine Mezeivtch, 6<sup>th</sup> grade Team leader**

**Mrs. Mary Klyap, PTA President**

**(email addresses and contact information on school website: [mvms.hcpss.org](http://mvms.hcpss.org))**

**WORKING  
TOGETHER  
TO PROVIDE  
A WORLD  
CLASS  
EDUCATION**



# THE PROMISE OF PREPARATION

## Vision

Every student is **inspired** to learn and **empowered** to excel

## Mission

We cultivate a **vibrant** learning community that prepares students to **thrive** in a **dynamic** world

**Middle school is a defining point for students in the college and career readiness process.**

Source: The Forgotten Middle: Ensuring that All Students Are On Target For College and Career Readiness Before High School, ACT, 2008.



**21<sup>st</sup>  
Century  
Skills**

**Student  
Behaviors**

**High  
School  
Readiness**

**College  
and  
Career  
Readiness**

# THE MIDDLE SCHOOL SCHEDULE



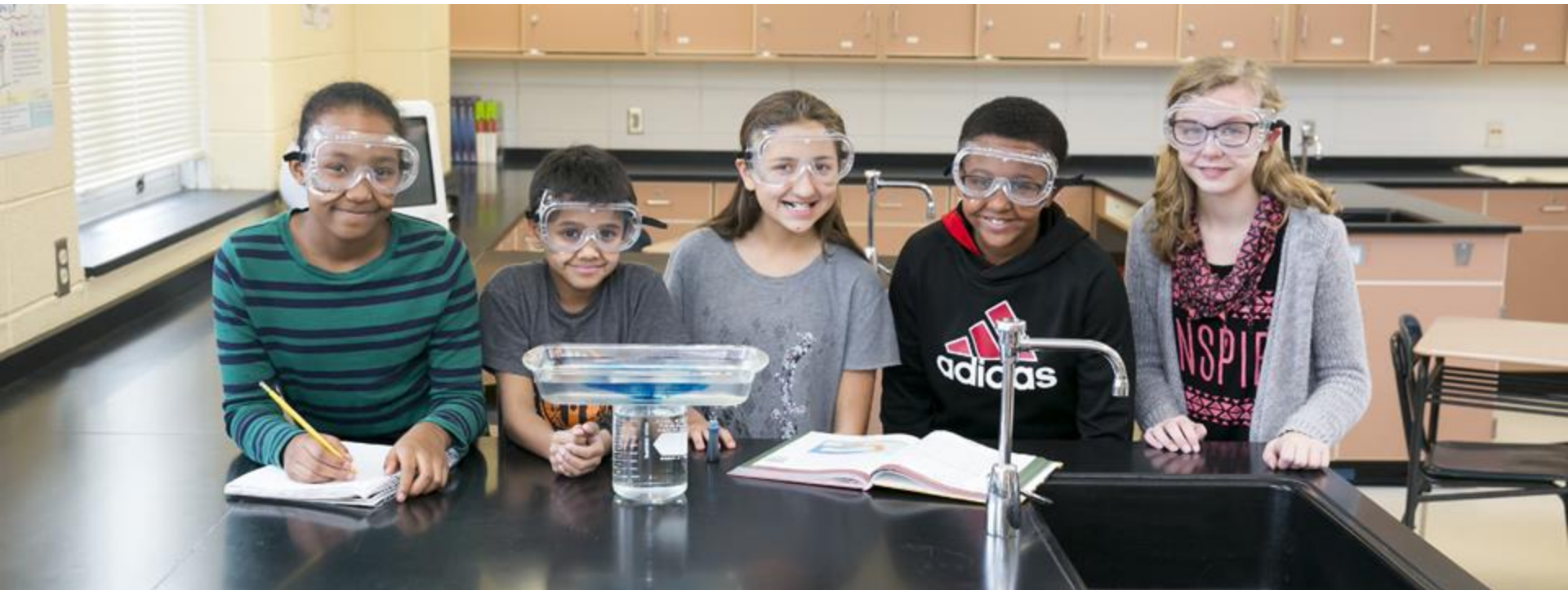
**The level of academic achievement that students attain by eighth grade has a larger impact on their college and career readiness than anything that happens academically in high school.**

Source: The Forgotten Middle: Ensuring that All Students Are On Target For College and Career Readiness Before High School





**All students are  
enrolled in seven  
50-minute classes every day  
and a 30 minute lunch**



All students receive daily instruction aligned to Maryland's College and Career-Ready Standards in:

**English**

**Mathematics**

**Social Studies**

**Science**



In addition Maryland regulations require all students to take :

**Health Education**

**Physical Education**

**Fine Arts** (General Music and/or Visual Arts)



# Music Performance Ensembles Options

Band – Chorus – Orchestra



- Year-long class
- Includes a daily large ensemble rehearsal, and a weekly small sectional
  - Scheduled on a rotational basis
- Ensembles are ability-based
- Music teachers will be in contact with elementary programs to schedule meetings and auditions

# **Additional Course Options**



**Technology Education**

**Reading and/or Math Intervention**

**Innovation & Inquiry Reading Modules**

**GT Research**

# Student Behavior



**Motivation and  
behavior,**  
combined, have  
**more impact**  
on a student's **readiness**  
than academic achievement.

**LearnED**  
by PEARSON

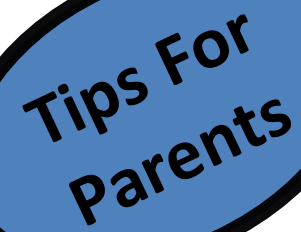
**The earlier a student develops important academically related behaviors, the more likely these behaviors are to become a habit.**

Source: The Forgotten Middle: Ensuring that All Students Are On Target For College and Career Readiness Before High School, ACT, 2008.

# SUPPORTING ACADEMIC BEHAVIORS

- **PBIS**
- **Organization Club (Tues/Thurs during Falcon Time)**
- **Use of Canvas and Google Apps for Education**
- **After school academic intervention for Reading and Math**
- **Advisory: during the last 30 minutes of the day once a week**
- **Use of agenda book for all students**





Tips For  
Parents

# SUPPORTING Positive Student BEHAVIORS

- Ensure that your child has the materials and place to study at home.
- Set a regular time for homework.
- Encourage your child to be responsible for chores and homework.
- Provide your child with a range of experiences to allow him/her to identify areas of strength.
- Talk to your child.

# IMPORTANT DATES

Date	Activity
5/22/2018	Fifth Graders Visit
8/2018	Student and Parent Orientation
September (TBD)	Back to School Night
October, 2018	Outdoor Education (cost around \$180)

# Middle School G/T Program



- Talent Development Offerings
- G/T Classes and Curricular Extensions
- Extended Day/Extended Year Programs

# Talent Development Offerings: G/T Instructional Seminars



**Instruction in  
Advanced-Level  
Skills**



**Open to All  
Interested  
Students**



**Creative  
Production or  
Inquiry**

# Where can I find out about G/T Instructional Seminars at my child's school? [mvmsgt.weebly.com](http://mvmsgt.weebly.com)

In the fall...

- Announcement in Viewpoint
- Announcement on Canvas
- Announcement on Facebook  
(mvmsgt)
- Visit 6th grade science classes
- Available during lunch shifts

# G/T Content Classes

- Accelerated and/or Enriched Curriculum
- Advanced-Level Content
- Inquiry-Based Instruction
- Application of Knowledge



# G/T English

- An accelerated pace
- Reading and analyzing challenging and complex literature and literary nonfiction independently,
- Writing a variety of interpretive, and analytical pieces, and conducting independent research.

Differentiated tasks and texts are included at all grade levels.

# G/T Social Studies

Provides an enriched and accelerated curriculum, including differentiated objectives, where students explore civic and cultural principles and engage in inquiries that focus on essential, related questions.

6 – Geography and World Cultures G/T

7 – Geography and  
World Cultures G/T

8 – United States  
History G/T





# G/T Science

An enriched and accelerated curriculum where students explore cross-cutting concepts, as well as science and engineering practices.

- 6 – Earth Science G/T
- 7 - Life Science G/T
- 8- Physical Science G/T



# G/T Mathematics

Provides an accelerated and enriched sequence that follows a curriculum of concepts at least two years above the general education curriculum.

- 6 - Pre-Algebra G/T
- 7 – Algebra I G/T
- 8 - Geometry G/T

# Middle School GT Research Class

- Authentic research to address real-world problems
- For students enrolled in G/T Math and G/T English based upon G/T Placement Committee recommendations



# Placement Process For Middle School G/T – 5th Grade

## 5<sup>th</sup> Grade

- CogAT administered to ALL students in December.
  - Meets State COMAR requirement for an ability measure.
  - Helps identify students who may underperform in school.
  - No longer requires parent/teacher request for testing.
- All students reviewed as part of G/T Placement Process.

# Parental Input in Placement Process

If after reviewing the Placement Committee's professional recommendation, parents/guardians still wish to enroll their students in one or more G/T classes, they may complete the Course Placement Review form.

# Extended Day/Extended Year

- Accelerated Mathematics
- Visual Arts - G/T Art
- G/T Orchestra, G/T Symphonic Band, and G/T Chorus
- G/T Summer Institutes for Talent Development

# Opportunities for Parent Engagement

- HCPSS G/T Website:  
[www.hcpss.org/academics/gt](http://www.hcpss.org/academics/gt)
- G/T Parent Academies
- HCPSS News for G/T Program Information
- HCPSS\_GT Twitter



# ***Learning a New Language at MVMS***

*Iris Chao*

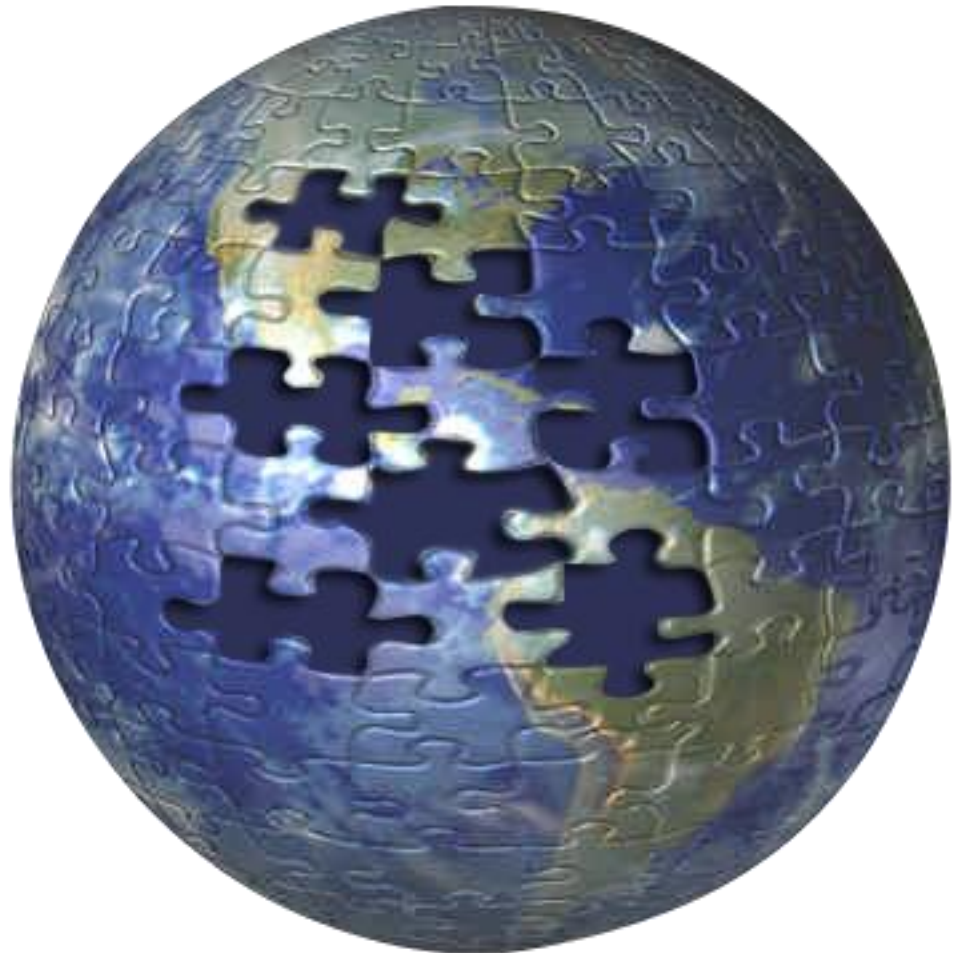
*Shannon Costello*

*Kristen Strickler*

*Astrid Colón*

*Barbara Sharbaugh*

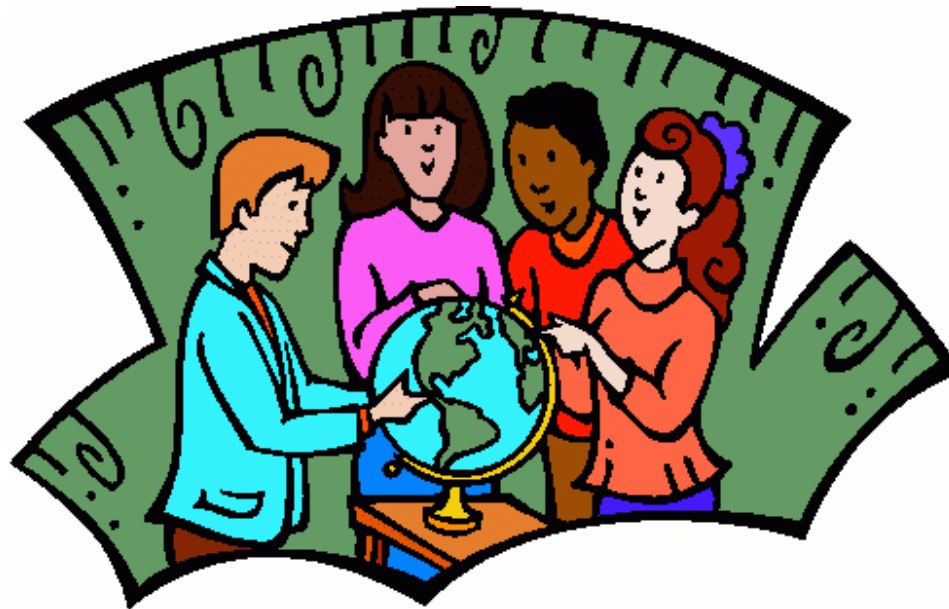
*January 10, 2018*





# Who is eligible to study a world language?

- **ALL students in 6<sup>th</sup> grade!**



# Which world languages are offered at MVMS?

- Chinese
- French
- Spanish

*Three year  
commitment*



# How often do the WL classes meet?

## 6<sup>th</sup> Grade

- **Every other day**
- **A Day/ B Day**
- **50 minutes**

## 7<sup>th</sup> & 8<sup>th</sup> Grades

- **Everyday**
- **Monday – Friday**
- **50 minutes**

# What is the workload of the WL class?

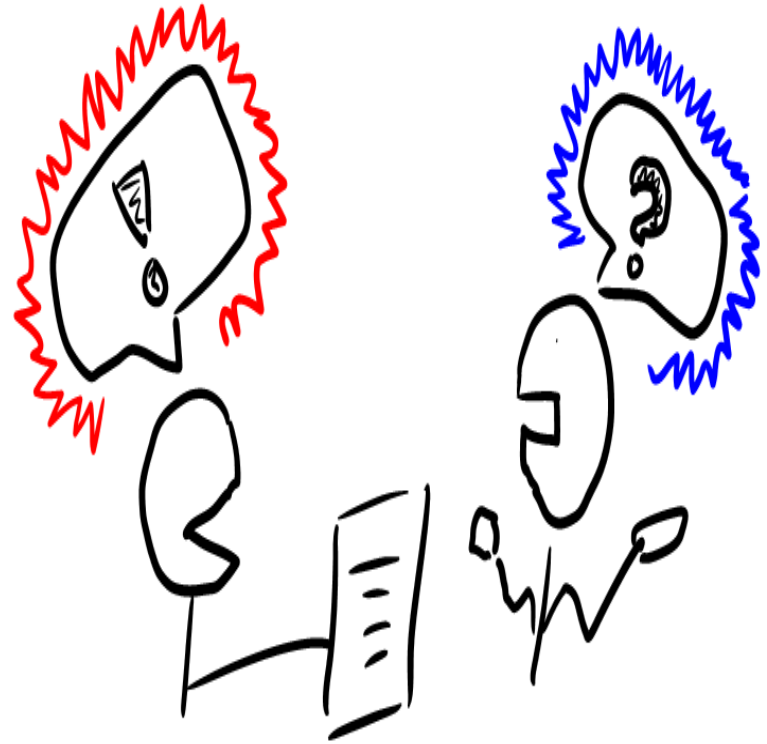
- **5<sup>th</sup> Academic Course**
- Homework
- Vocabulary/Language Structures
- Quizzes/Tests/Projects
- Performance Tasks
- Practice time outside  
of class (vocabulary)



# What are WL classes like?

## Proficiency Based Approach

- ❖ Interactive
- ❖ What learners know and can do with the language
- ❖ Real-life scenarios
- ❖ Instruction 90-100% in target language
- ❖ Development of skills reflecting the modes of communication: interpretive, interpersonal, presentational



# **A Successful World Language Student Can...**

- Work independently, with partners and groups
- Perform tasks in speaking, reading, writing, and listening in the target language.
- Complete homework
- Study outside of class
- Explore and connect with other cultures as well as their own
- Develop a deeper understanding of the structure of language, and important literacy skills

# *How can I learn without speaking English?*

- **Pictures**
- **Gestures**
- **Movement**
- **Songs**
- **Video Clips**
- **Poetry**
- **Literature**
- **Games**

90%  
in  
TARGET  
LANGUAGE



# How does the WL class advance in high school?

- **High School Placement**

- Determined in 8th grade year:

- **Level 2**
- **Level 2 Honors**
- **Repeat Level 1**

- Students must pass end-of-course assessment to advance to Level II in high school.





- **Language Credit!**

- **Transcript** - Student's overall course grade
- **Credit** - **Earn one language credit** toward the 21 required credits for graduation
- Student's grade will ***not*** be calculated into the high school GPA
- **If a student re-takes level 1 in high school...**
  - The ***high school*** grade will be calculated into the GPA
  - Only **one** credit will be awarded



**Thank you for coming!**

We look forward to seeing you in  
August